

D I V O T S

IN STOCK BASICS II

DIVOTS SPORTSWEAR, INC.  
5903 Peachtree Industrial Blvd., Suite A  
Peachtree Corners, GA 30092

Phone: 770-447-4800

Toll Free: 1-800-847-3467

Fax: 770-448-3244

[www.divots.com](http://www.divots.com)

email: [info@divots.com](mailto:info@divots.com)







## PRIVATE LABEL PROGRAM

Divots is the “original” source for private label apparel.

For 42 years we have been supplying custom labels, hangtags and designs to the golf, resort and corporate markets.

Let us and our design team create the perfect private label apparel and strategic branding that will set your club, your resort or your company apart from other branded product.





OUR BEST SELLING PERFORMANCE POLO FOR BOTH MEN AND WOMEN. MADE IN OUR DRI-WAY MOISTURE MANAGEMENT SYSTEM OF 95% COOLMAX AND 5% SPANDEX. THIS TEXTURED STRIPE FABRIC IS THE ULTIMATE IN COMFORT AND EASY CARE. AVAILABLE IN 20 COLORS.



**LADIES STYLE: 405V**  
Two-Button, Banded Sleeve

SIZES: S-XL

Available Colors:  
BLACK, CANARY, CARIBBEAN,  
CHARCOAL, GRAPE, ICE BLUE,  
MINT, NAVY, ORCHID, PINK,  
RED, SKY, WHITE



**MEN'S STYLE: 405**  
Three-Button, Open Sleeve

SIZES: S-3XL







OUR CLASSIC STRETCH POLO IS NOW AVAILABLE IN THE DRI-WAY  
95% POLYESTER/5% SPANDEX. A TIMELESS FAVORITE ON AND OFF THE  
COURSE. AVAILABLE IN FIFTEEN COLORS FOR BOTH MEN AND WOMEN.



ICE BLUE

SEA BLUE

CARIBBEAN

BASIL

MIAMI

HUNTER

BLACK

WHITE

NAVY

CANARY

ORANGE

RED

CRIMSON

PINK

PURPLE

CHARCOAL



**LADIES STYLE: 215L**  
Four-Button, Open Sleeve

**SIZES: S-XL**

All colors except  
Purple and  
Charcoal



**MEN'S STYLE: 8111P**

Three-Button, Open Sleeve

**SIZES: S-3XL** Available in all colors.





THE ULTIMATE PIQUE BLENDING THE COMFORT OF  
COTTON AND THE EASE OF CARE OF COOLMAX  
IN TRADITIONAL STYLING  
60% COTTON/40% POLYESTER



### LADIES STYLE: 203V

Two-Button, Banded Sleeve

SIZES: S-XL

Available Colors:

SKY  
WHITE  
ICE BLUE  
CARIBBEAN  
BLACK  
HUNTER  
MINT



### MEN'S STYLE: 8112U

Three-Button, Banded Sleeve

SIZES: S-XXL

\*XXXL Colors Only

PERFORMANCE FABRIC



### LADIES & MEN'S COLORS





# DIVOTS

Red/  
White

White/  
Bermuda

Baltic/  
White

Navy/  
Camel



**STYLE: 1573**  
Men's Performance,  
95% POLYESTER/  
5% SPANDEX  
Pin Stripe  
Open Sleeve  
Self Fabric Collar

MEN'S SIZES S-XXL

## MEN'S STYLE: 1620

95% POLYESTER 5% SPANDEX Jersey Solid Body, Micro Stripe Placket and Neck Band, Tailored Collar  
SIZES: S-XXL



Lagoon/  
Marine

Lavender/  
White

Navy/  
White



Regal/  
White

White/  
Navy





# **MEN'S STYLE: 1636**

95% POLYESTER 5% SPANDEX, Melange with Raglan Sleeve, Tailored Collar

SIZES: S-XXL



Melange Charcoal Melange Lagoon Melange Marine



Melange Light Lilac Melange Regal Melange Rose Melange Navy



# **MEN'S STYLE: 1637**

95% POLYESTER 5% SPANDEX, Stripe Pique, Tailored Collar

SIZES: S-XXL



Aqua/Navy

Lagoon/White



Lavender/White

Lt Blue/White

Marine/Lagoon

Marine/White

Navy/White

Rose/White

Regal/White





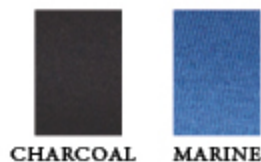
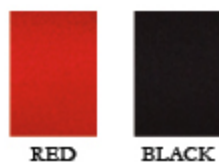
"BEST IN CLASS" - OUR 100% MERCERIZED  
70's TWO-PLY PIMA COTTON LISLE POLO.  
A LUXURIOUS FINISH AND SOFT SILKY  
APPEARANCE MAKE THIS THE  
PERFECT SHIRT FOR ON AND  
OFF THE COURSE.



**MEN'S STYLE: 7200**  
Three-Button, Open Sleeve  
SIZES: S-XXL



**MEN'S STYLE: 7300L**  
60's DOUBLE MERCERIZED  
100% COTTON Solid,  
Long Sleeve Polo  
SIZES: S-XXL





# DIVOTS

## - LONG SLEEVE COLLECTION -



### MEN'S STYLE: 405L

100% COOLMAX, Texture Stripe,  
Long Sleeve, Knit Cuff SIZES: S-XXL



BLACK



CARIBBEAN

PERFORMANCE FABRIC  
DriWay  
Advanced Moisture System



RED



NAVY



WHITE

## - WOVEN SHIRTS -

WHITE

BLUE



### MEN'S STYLE: 203140

100% COTTON,  
Non-Iron Pinpoint  
Button Down  
Woven Shirt 80's 2-Ply  
SIZES: S-3XL



# DIVOTS

- MEN'S TRADITIONAL SWEATER COLLECTION -

## **MEN'S STYLE: 817V**

Classic V-Neck Vest

55% COTTON/  
45% ACRYLIC

SIZES: M-XXL



## **MEN'S STYLE: 811S**

Classic V-Neck Pullover

55% COTTON/45% ACRYLIC

SIZES: M-XXL



SILVER  
HEATHER



BLACK



NAVY



RED



# DIVOTS

## STYLE: 830

1/4 Zip Long Sleeve Stripe Sweater  
55% COTTON 45% ACRYLIC

MEN'S SIZES S-XXL



## STYLE: 832

1/4 Zip Long Sleeve  
Accent Trimmed Placket  
80% COTTON 20% POLYESTER

MEN'S SIZES S-XXL



Navy

## STYLE: 832V

1/4 Zip Vest Accent Trimmed Placket  
80% COTTON 20% POLYESTER

MEN'S SIZES S-XXL



Grey



## - TRADITIONAL SWEATERS -

55% COTTON / 45% ACRYLIC  
MEN'S SIZES: M-XXL

**STYLE: 819S**  
Long Sleeve 1/4 Zip



SILVER  
HEATHER  
LONG SLEEVE ONLY



BLACK



CHARCOAL



RED



NAVY

**STYLE: 818V**  
Quarter Zip Vest





# Scottish Winds

- LINED WIND SWEATERS -  
60% COTTON / 40% ACRYLIC

## STYLE: 334

Baby Cable Lined 1/4 Zip Windsweater



Navy



Grey



Black



Hunter



## STYLE: 805

Flat Knit Lined 1/4 Zip Windsweater

SIZES: M-XXL



Black



Camel



Lt Grey



Navy



**SCOTTISH WINDS HYBRIDS** - The 100% nylon satin liner inside the sweater provides a break from the wind for outdoor wear, as well as acting as a moderator to keep you cooler during warmer occasions. This sweater is suited for all day wear while keeping you comfortable.

- The outer shell is made of a 60/40 blend of imported cotton and acrylic, and is fully machine washable. Upscale in look, and unlike wool and pure cotton, will not lose its shape when laundered. This rich "cotton hand" blend resists wrinkles, making it a fabulous companion for travel.
- Our fresh, classic styling, and superior comfort allows this sweater to be worn just about anywhere, and will easily become your "go to" for just about any occasion. Whether you wear it to play golf, for a night out, or in a corporate environment... you'll always be fashion right and comfortable!
- Scottish Winds Hybrids are generously cut to allow for movement and layering



# DIVOTS

## - MEN'S PERFORMANCE LAYERING PIECES -

### STYLE: 415

Men's 70% PIMA COTTON  
30% POLY Interlock Mock



MEN'S SIZES S-XXL



### STYLE: 445

Men's 10oz 80% COTTON 20% POLY  
Ultimate FLEECE Sweatshirt  
Knit Bottom and Cuff



MEN'S SIZES S-XXL



### MEN'S STYLE: 448S

90% POLY/10% SPANDEX  
1/4 Zip Pullover

MEN'S SIZES: XS-4XL



STYLE: 452 Men's 1/4 Zip 9oz  
65% COTTON 35% POLY Fleece Sweatshirt  
Knit Bottom and Cuff

MEN'S SIZES XS-4XL







### STYLE: 451

95% POLYESTER 5% SPANDEX

Space Dyed, 1/4 Zip Light Weight

Performance Layering Piece

MEN'S SIZES S-XXL



### STYLE: 453

95% POLYESTER/5% SPANDEX

Color Block Stripe, 1/4 Zip

Performance Layering Piece

MEN'S SIZES S-XXL



### MEN'S STYLE: 548

8oz 100% Polyester, 1/4 Zip Fleece, Contrast Lining Raglan Sleeves

SIZES: XS-4XL





- MEN'S WIND AND WATER  
TOURNAMENT TESTED  
OUTERWEAR -

1/4 ZIP MICROFIBER  
TEFLON COATED  
WATER REPELLENT  
SWING QUIET FABRIC  
SIZES: M-XXL

**MEN'S STYLE: 788UHV**  
Windvest



NAVY



BLACK



**MEN'S STYLE: 777MZ**  
Windshirt



NAVY



NATURAL



BLACK





## STYLE: 6037

100% POLYESTER Water Repellant  
Wind Jacket with Hidden Hood  
MEN'S SIZES: M-XXL



Navy/Red



Black/Grey



Khaki/Mocha



Red/Navy



Slate/Navy



Stone/Navy



## STYLE: 6039

100% POLYESTER, Colorblock Soft Shell Jacket  
Water-Resistant, Mesh Interior, Full Zipper  
Front Zippered Pockets, Elastic Binding at Cuffs  
MEN'S SIZES: M-XXL



Green/Grey Steel



Black/Royal



Black/Red



Grey Steel/Rogue Grey



Navy/Grey Steel



Black/Grey Steel





## MEN'S STYLE: 200V

7.5oz. 100% Polyester Microfleece  
Anti-Pill Vest

SIZES: XS-4XL



GREY



BLACK



NAVY



ROYAL



## MEN'S STYLE: 100

14.5oz. Premium Anti-Pilling Fleece

100% Spun Polyester  
Zip Front with  
Contrast Inner Collar

SIZES: M-XXL



ROYAL BLUE/  
BLACK



BLACK/  
BLACK



CHARCOAL/  
BLACK



GRAPE/BLACK



NAVY/  
NAVY



RED/  
BLACK



## - LADIES FLEECE -

### ANTI PILL FLEECE

#### LADIES STYLE: 200VL

7.5oz. 100% Polyester Microfleece  
Full Zip Vest

SIZES: XS-XL



GREY



ROYAL



WHITE



FUCHSIA



BLACK



#### LADIES STYLE: 100L

12.8oz. Anti-Pilling Brushed Micro Fleece,  
Full Zip with Center Seam Pockets

SIZES: XS-XXL



BLACK



CHARCOAL



CREAM



EGGPLANT



PERIWINKLE



NAVY



DARK ASH



HEATHER  
EMERALD



HEATHER  
VIOLET



HEATHER  
ROSE





## LADIES STYLE: 448SL

90% Polyester 10% Spandex, 1/4 Zip Pullover

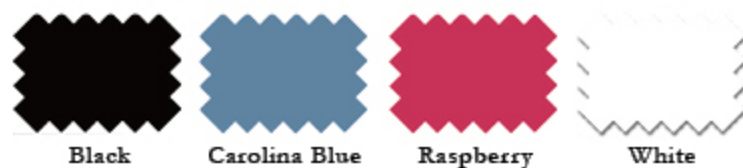
SIZES: S-XL



## LADIES STYLE: SC3271

Full Zip Tech Micro Fiber Sport Jacket

SIZES: S-XL

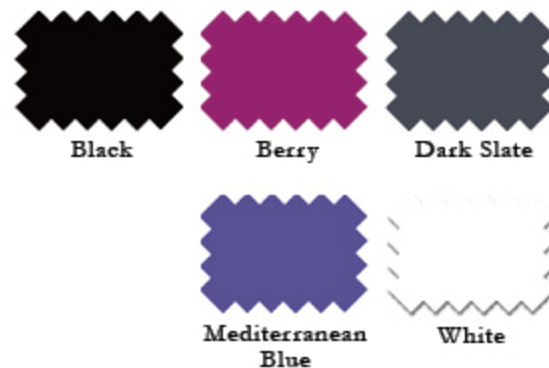


## - LADIES OUTERWEAR -

### LADIES STYLE: 242LV

Quilted Poly Vest

SIZES: S-XXL





# DIVOTS

**STYLE: 6000** 100% Microfiber Performance Cap



Grey

Black

Khaki

White

Navy

**STYLE: 6245** 100% Unstructured, 100% Cotton Twill Cap



Carolina Blue

Khaki

Black

Stone

Navy

White

## **MEN'S STYLE: 69S**

Men's Microfiber  
Flat Front Short,  
9" Inseam,  
Soft Silky Finish  
Stain Resistant

5 Colors:

Black, White, Khaki,  
Navy, Stone

Sizes: 32-42



Stone

Navy

Khaki

Black

# DIVOTS

SINCE 1976

- CUSTOM TOWELS -



Black



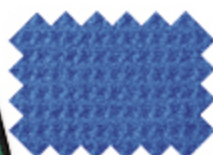
Hunter



Mocha



Red



Royal



White

TWL-200 22x44

Waffle Weave

Microfiber Towel



TWL-300 16x25

Waffle Weave

Microfiber Towel



Sheared Custom  
Woven Solid  
16x24



White/  
Royal

White/  
White

White/  
Red

White/  
Black

White/  
Hunter

SPORTTWL.

Sport Towel

Ribbed Stripe

22x44



# DIVOTS

- STOCK TOWELS -

SINCE 1976

Our signature towels are made from thick, soft, absorbent cotton. In solids and prints, they're the one item no golfer can live without. Make sure there's a customized one in every bag this year. Available in single and double fold.



Seapines



Kiawa



Plantation



Heritage



Harbortown

**Stock  
Sheared  
Plaid Towel  
16x24**



**Stock Sheared  
Check Towel  
16x20**

Black/Khaki

Navy/Hunter



**Solid Plush  
Velour Towel 16x25**



Black



Hunter



Red



Navy



White



Since 1976, Divots has provided the best in quality, comfort and styling for men and women on and off the course. The highest value in fabrics and detail is Divots' signature, guaranteeing instant classics your customers will come back for again and again.

Our goal is to make sure you are 100% satisfied in all your dealings with us. Regardless of the quantity or individualized needs of your order, we are here to ensure you receive the special attention you deserve.

At Divots our motto is Quality, Fit, and Performance.

**1976-2018**  
**42 YEARS OF EXCELLENCE**